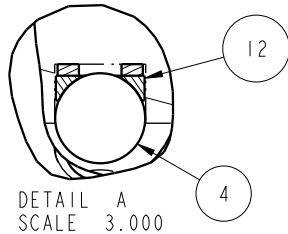
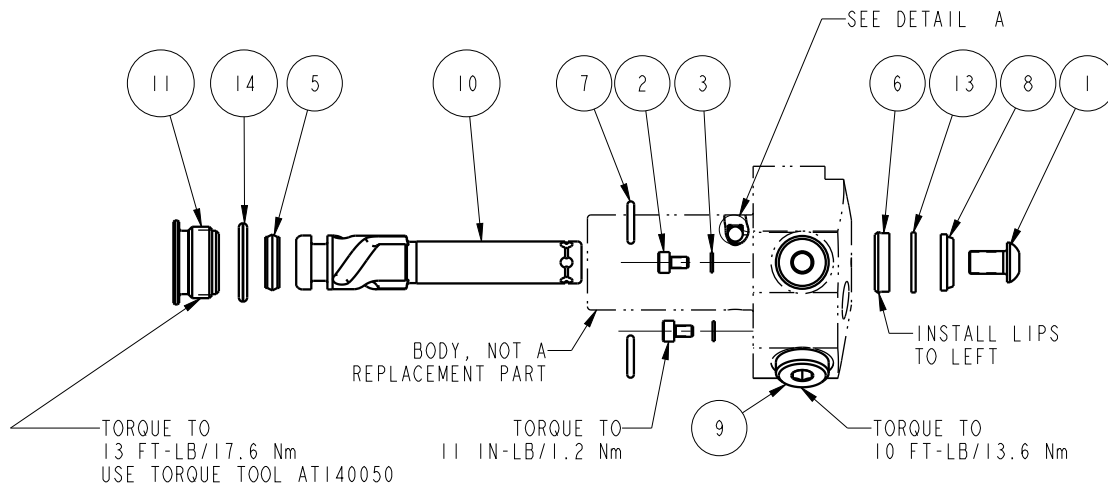



NO	QTY	PART NO	DESCRIPTION	STD SEAL KIT	FKM SEAL KIT
1	1	21500008	SCREW, CAP, BTNH, M6 X 10, ALY		
2	2	21500018	SCREW, CAP, SOCH, M3 X 5, ALY		
3	2	21500200	WASHER		
4	3	23600014	BALL, STEEL, ALLOY, .156	X	X
5	1	39010037	SEAL, CROWN, 3/8x9/16x5/32	X	39V10037
6	1	39010038	SEAL, BEVEL, 7/16 x 3/32 x 5/8	X	39052014
7	2	39050042	O-RING, (-011)	X	39051025
8	1	39053004	WIPER, SNAP-IN, (7/16)	X	X
9	2	43068004	PLUG, SOCH, G1/8		
10	1	47510503	PLUNGER, SC, HS, 2KN, LH		
11	1	81400028	RETAINER, SC, HS, 450		
12	3	90199956	ASSY, BALLSEAT, SC, 450	X	X
13	1	39F54000	BU RING, (-111)	X	X
14	1	39V00036	O-RING, (-908)	X	X
N/A	N/A	60414501	KIT, SEAL, STANDARD		
N/A	N/A	6V414501	KIT, SEAL, FKM		



PARTS LIST	 VEKTEK VEKTEK, INC. 1334 E. SIXTH AVE. P.O. BOX 625 EMPORIA, KS. 66801 U.S.A.
	ASSEMBLIES AFFECTED 41460222
PARTS LIST, ASSY, SC, TF, TC, 2KN, DA, LH SIZE A MPL1405	REV C SHEET 1 OF 1

C	5279	RELEASE	ALS	4/25/24
REV	IN ACCORDANCE WITH ECN	EFFECTIVE DATE	REVISED BY	DATE
DRW BY:	DRAWING STATUS: Released			
DATE: 03/13/13	PRODUCTION APPROVED FOR RELEASED STATUS ONLY			